

StatBar 2.406

© Bart Kneepkens 2000-2003

- StatBar is a freeware system status bar which allows you to quickly get an overview of your system's condition (memory, CPU, uptime, and much more). It also contains some nice features like a volume control, Winamp controls and atomic time synchronization. The program is quite easy to use; when you start it for the first time, it will dock itself at the top of your screen. Your desktop will be resized to make room for the StatBar window; that way maximized windows will not overlap the program. The position (top or bottom) and the behavior (static or auto-hide) of the main window are customizable using either the popup menu or the configuration window.
- **Have fun using StatBar!**

Legal Stuff

- [Disclaimer & Program Status](#)
- [Trademarks](#)

Using StatBar

- [The Main Window](#)
- [The Configuration Window](#)
- [The Update Check Window](#)
- [Information Modules](#)
- [Tips, Tricks, Notes & Bugs](#)

Miscellaneous

- [Revision History](#)
- [Development](#)
- [Contact](#)

Disclaimer & Program Status

(The **really** boring part of this help file ;-))

- **Disclaimer**

The official version:

- This software is provided "as is" and any express or implied warranties, including, but not limited to, the implied warranties or merchantability and fitness for a particular purpose are disclaimed. In no event shall the creator be liable for any direct, indirect, incidental, special, exemplary, consequential, or any other kind of damage caused by this software.

The understandable version:

- You use this program entirely at your own risk.

- **Program Status**

StatBar is freeware. You are allowed and encouraged to copy and distribute it as long as the program and its accompanying files, including this help file, are not modified in any way and all copyright notices remain intact. You may not sell it or charge anything for copying it.

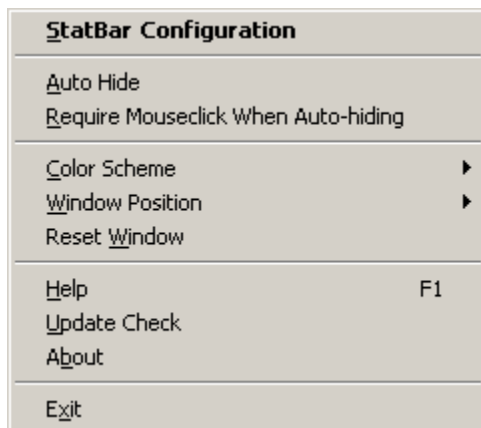
Main Window



- This screenshot was taken using the default StatBar configuration at a screen resolution of 640 x 480 pixels. You can see 5 different information modules here: Windows version, Windows uptime, Memory status, CPU usage, and Locks status. Additional modules can be displayed and configured using the [configuration window](#).

You can also use the configuration window to change the color scheme or window behavior, but a quicker way to accomplish this is by using the popup menu described below.

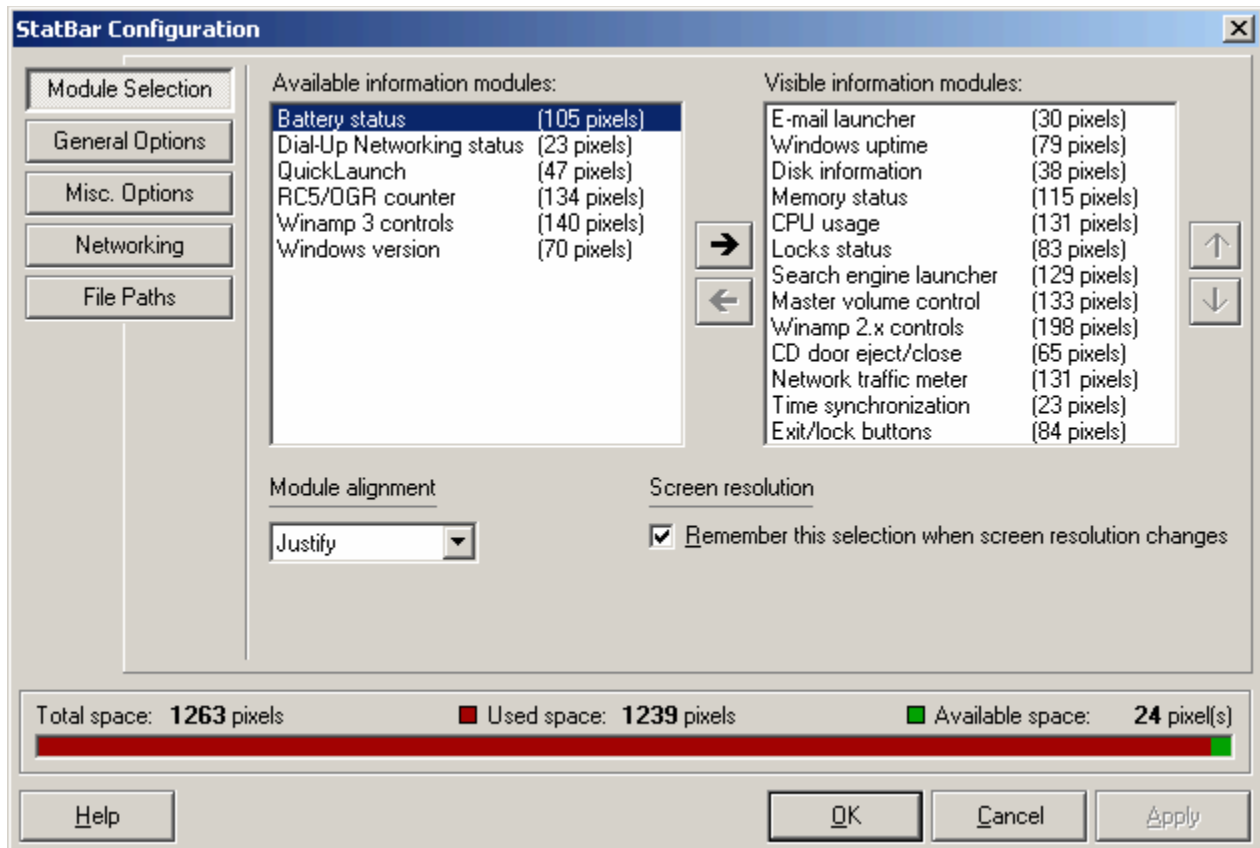
- If you right-click the main window, this menu will pop up:



You can click the menu items above for a short description.

Configuration Window

- The screenshot below was taken using my own StatBar settings on a screen resolution of 1280 x 960 pixels.



- The configuration window consists of 5 different areas:

Information module selection

- Select the info modules you'd like to see here. The green/red meter indicates the amount of space available and the amount of space used by the selected modules. Click [here](#) for information on the various modules.

General program settings

- All pretty obvious; some of these options are directly configurable via the popup menu as well.

Miscellaneous settings

- Most of the options here speak for themselves. If you don't know what a certain option does, just change it and see what happens... it won't blow up your computer :-)

Networking-related options

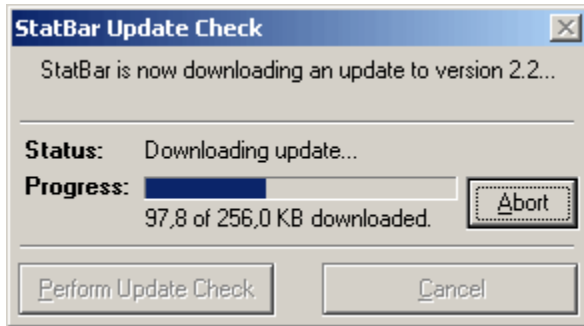
- Settings for the network traffic meter and the time synchronization module.

File paths

- This shouldn't need any explanation when you see it...

Update Check Window

- Since version 2.2, StatBar contains an update check. This function, which is accessible via the popup menu, will check if a new version of the program is available. If so, StatBar can download and automatically install it for you.



Information Modules

- The following information modules are included in this version of StatBar:

- **Battery status**

Displays the remaining battery power, as well as the current power source for your notebook computer.

- **CD door eject/close**

Allows you to open and close the tray of your CD-ROM drive with just a mouseclick.

- **CPU usage**

Displays a percentage indicating the current central processing unit usage. A history graph is drawn as well, which can be turned off to save space.

- **Dial-Up Networking status**

Displays whether you have an active dial-up connection or not.

- **E-mail launcher**

Just a single button which allows you to quickly compose a new e-mail message using your default mail client.

- **Exit/lock buttons**

Displays buttons which can be used to log off the current user, reboot the system, shut down the system, or lock the workstation.

- **Harddisk information**

Displays an harddisk icon which, when clicked, shows a panel with information on all of your harddisk partitions (volume name, type, free/used/total space).

- **Locks status**

Displays three lights indicating the state of NumLock, CapsLock and ScrollLock. Doubleclicking one of these lights toggles the state for that particular lock key.

- **Master volume control**

Displays and lets you control your soundcard's master volume level. Includes a mute option as well.

- **Memory status**

Displays the available/used and total amount of physical memory (RAM).

- **Network traffic meter**

Displays the current download and upload speed for selected network adapters, as well as the total amount of data sent and received (which is displayed in the tooltips).

- **QuickLaunch**

Allows you to quickly start programs from StatBar (you can add programs via the File Paths part of the [configuration window](#)).

- **RC5/OGR counter**

If you are participating in the RC5-72 project or the OGR project of distributed.net, this info module can display the number of blocks and work units in your buff-out file. You should let the distributed.net client generate a logfile, which you can then select in StatBar. The program will automatically detect whether the logfile you selected is an OGR or RC5 log.

- Search engine launcher

Allows you to quickly enter a search query using your favorite internet search engine.

- Time synchronization

Automatically synchronizes your system time with an atomic time server on the internet. You can select a server from a predefined list, or you may enter one yourself.

- Winamp 2.x controls

Displays the current Winamp song time, as well as five buttons to control playback (previous, play, pause, stop, next), a button to start or close Winamp, and a "jump to file" button.

- Winamp 3 controls

Allows to to start and close Winamp 3 and control playback (previous, play, pause, stop, next).

- Windows uptime

Displays the time elapsed since Windows was started.

- Windows version

Displays what version of Windows you are running.

Tips, Tricks, Notes & Bugs

- If you think this section looks like a lot of unappealing text: you're absolutely right ;-)
It does contain useful information though, so if you want to get the most out of StatBar, please read on.

- **Tips & Tricks**

- Most items on the main window will display useful tooltips when you hold your mouse cursor over them.
- The little speaker displayed in the volume control module acts as a mute button; clicking it (un)mutes the volume.
- The time synchronization module can display three different lights:
 - Green: time synchronization succesful
 - Red: time synchronization failed
 - Blue: time synchronization in progress
- Normally, the time synchronization triggers at the interval rate you have set in the configuration window (the default interval is 10 minutes). To synchronize your system time immediately, you can doubleclick either the "Time synch" text or the status light.
- If you hold your mouse cursor over the info modules in the configuration window, a short description will pop up.
- If your mouse is equipped with a scroll wheel, you can use it with StatBar's volume control. If the main window is active, rolling the mouse wheel will increase or decrease the volume by one percent. If you hold down the Shift key while rolling, the volume will change by 10 percent.
- Clicking the free amount of RAM will display the used amount of RAM and vice versa.
- Clicking the elapsed Winamp 2.x song time will display the remaining song time and vice versa.
- Doubleclicking Num Lock, Caps Lock, Scroll Lock or Insert lights will toggle the state for that particular key.
- The Winamp 2.x controls take into account the state of the Ctrl and Shift keys when you press them; they react the same way the buttons in Winamp do (e.g. you can hold down Ctrl and click the stop button to stop when the current song has ended; just like in Winamp 2.x itself).
- ...and more!

- **Notes**

- If you are running a firewall and you want to use the time synchronization module in StatBar, you should configure your firewall in such a way that StatBar can connect to the

selected time server using remote TCP port 37 (Time protocol, RFC 868).

- StatBar may not work with alternative shell managers for Windows, such as LiteStep or Talisman. There's little that can be done about this; StatBar has been designed to follow Microsoft's application desktop toolbar specification as closely as possible.
 - On Windows 98 and Windows Millennium Edition, StatBar may sometimes display incorrect values for the amount of free/used memory and CPU usage. This seems to be an issue with these versions of Windows, as the Windows System Monitor displays the same values as StatBar does.
 - On all versions of Windows, the total amount of memory detected may be one MB less than it should be. Windows simply detects a little less; this is not a program bug in StatBar. By default, StatBar will try to correct this value for you. If the detected amount of memory is an odd number of megabytes, the program simply adds 1 MB.
 - On Windows 95, 98 and ME, the Windows uptime displayed by StatBar will never reach 50 days. This is a deficiency of Windows, as the GetTickCount call (which is used to determine the uptime on those platforms) returns the number of milliseconds since Windows was started as a 32-bit unsigned integer. This results in a maximum measurable uptime of 49 days, 17 hours, 2 minutes and 47 seconds.
 - The Lock Workstation button is only available in Windows 2000 and above. Windows 95/98/ME and NT 4.0 do not support this feature (although NT 4.0 can be locked after pressing Ctrl-Alt-Del, there is no API call available that locks the workstation).
 - The network traffic meter is refreshed every second, regardless of the update interval you set in the configuration window. This is done to ensure that the values displayed by this module are as accurate as possible.
 - The CD door eject/close functions may not be supported by all CD-ROM drives.
 - The current download/upload speed in the network traffic meter is displayed in kilo/megab**ytes**, not in kilo/megab**its**.
 - If you add a shortcut to a non-executable item to the QuickLaunch module (e.g. an HTML document), the Normal/Minimized/Maximized setting may have no effect. This setting only applies to executables, so for example, if you'd like to start an HTML document in a minimized state, then add a shortcut to your favorite web browser, set it to start minimized, and enter the path to the HTML file in the parameter field.
- **Known bugs**
 - Under Windows 95/98/ME, the NumLock, CapsLock, ScrollLock and Insert lights may not be updated until you move the mouse cursor over the StatBar window. This seems to be an issue with those Windows versions, as it works fine under Windows NT/2000/XP.
 - The time synchronization may sometimes fail when it first checks the time at startup of the program.

Revision History

- **Version 2.406 (July 25, 2003)**

- When trying to add an item to the QuickLaunch list without selecting an icon, Statbar would automatically select the icon you picked for the last item you added. Fixed.
- On Win95/98/ME, the "Exclude process" label in the configuration window wasn't grayed out, despite the fact that this function isn't available on those platforms. Fixed.
- When using quotes in the search engine module, the query wasn't sent to the search engine properly. Fixed.
- When starting Winamp, the working directory is now set to the directory in which the Winamp executable is stored. Otherwise, some Winamp plugins which require serial numbers wouldn't work.

- **Version 2.405 (July 12, 2003)**

- On some Win2000/XP systems, StatBar 2.4 would consume all available memory on startup, and the program would eventually crash. This was due to a bug in the performance counter routines. Fixed.
- The RC5/OGR counter module has been updated. It now also displays the statistics for the buff-in file instead of only for the buff-out file. This data is now displayed in the tooltip for the cow icon. The "blocks" and work "units" indicators on the bar have been removed, which saves some space.
- Added an option to let the W button in both Winamp control modules pop up Winamp instead of close it.
- Added an option to let the disk information panel pop up when you move your mouse over the disk icon instead of having to click it.
- Added an option to turn off the tooltips for the main window.

- **Version 2.4 (July 11, 2003)**

- The update check function would display a message stating "An error has occurred while extracting the update files" when updating the program while the .HLP or .CNT file was not present in the StatBar folder. Fixed.
- Starting StatBar while your system uptime had reached 25 days would cause the program to quit with a "Run-time error 6: Overflow" message (keeping the program active while passing that "25 day limit" would cause no problems though). Fixed.
- Resetting the main window via the option in the popup menu would cause all adapters for the network traffic module to be suddenly deselected. Fixed.
- When earlier versions of StatBar were placed at the bottom of your desktop, some of the tooltips would appear at the top of your screen. This seemed to be an issue with VB and/or Windows, but StatBar now uses a custom-written tooltip mechanism for the main window. Ergo: fixed.
- Under WinNT/2000/XP, the disk information panel would not display a drive's volume label, file system type and total capacity if the volume label was longer than 11 characters. This is the maximum volume label length on FAT systems, but NTFS supports labels of up to 32 characters. Fixed.
- TDS3 (Trojan Defense Suite) incorrectly suspected StatBar to be a trojan; this was due to the way the CD door eject/close module in StatBar works. Fixed.
- Under Windows XP, the "jump to file" button in the Winamp controls module often didn't function properly. Should be fixed now.
- On some systems, the master volume control module somehow malfunctioned. Should be fixed now. (I hope...)

- On Windows NT/2000/XP and above, the uptime module is no longer limited to 49.7 days.
- The "skinning" part of the code has been rewritten almost completely. Switching color schemes is a bit slower now, but it uses much less resources under Win95/98/ME.
- Added the E-mail launcher module.
- Added the Winamp 3 controls module and renamed "Winamp controls" to "Winamp 2.x controls".
- Added the Search engine launcher module.
- Added detection of Windows Server 2003 (which is actually NT 5.2, formerly known as Windows.NET Server) and Longhorn (which is actually NT 6.0).
- Adapted the RC5/OGR counter module to the RC5-72 project logfile format.
- Added the ability to pause or stop Winamp playback when you click the "Lock Workstation" button.
- Added the ability to show the "MB" text in the memory status info module again.
- The tooltip for the "WA2:" text now also displays the song duration, bitrate, samplerate and number of channels.
- The tooltips for the Previous and Next buttons (for both Winamp modules) now display the current song as well.
- The tooltip for the percentage digits in the battery status module now displays the remaining battery lifetime as well, if available.
- Added dual CPU support to the CPU usage module.
- Added the ability to exclude a process from the CPU usage calculations (useful if you are participating in a distributed computing project). Please note that this feature is only available under WinNT/2000/XP and above.
- Added an option to show mapped network drives and removable drives in the disk information panel.
- Added support for terabyte volumes to the disk information module.
- Extended the QuickLaunch module; it's now possible to specify a working directory, parameters, a custom icon, and the startup mode as well.
- The drives on the disk information panel are now clickable; clicking them launches a default Windows Explorer window for that drive.
- Added a tooltip to the activity monitor in the network traffic module, which displays the IP addresses of the adapters being monitored.
- Changed the look of the Locks status module and added support for the Insert key state.
- Replaced the "D:" and "U:" (download/upload) labels for the network traffic meter by arrows.
- StatBar now displays the amount of used RAM instead of the the amount of available RAM by default.
- The default color scheme is now "Silver (WinXP style)" instead of "Gray & Green".
- The "Show digit backgrounds" option is now turned off by default.
- The "Hide panel when mouse leaves it" option is now turned off by default.
- The transparency level is now indicated and editable using a percentage text field as well as via a scrollbar.
- Rearranged the configuration window, making the space meter visible at all times.
- Some huge internal restructurings; the code is much more modular now. Still a lot of work to do though...
- Removed some screenshots from this help file, thus reducing its size.

- **Version 2.301 (April 1, 2002)**

- Simply adding a module to the list of visible information modules (without doing anything else) would not enable the Apply button, which also caused the OK button to malfunction. Fixed.

- **Version 2.3 (March 31, 2002)**

- Under Windows XP, a gray rectangle in the middle of your screen would be visible for a short time on startup of the program. Fixed.
- A small flaw in the CPU usage module might, under rare circumstances, have caused StatBar to crash. Fixed.
- The digits for the Windows NT version number (only visible on NT 4.0) would not be updated when toggling the "Show digit backgrounds" option. Fixed.
- The total space in the configuration window wasn't calculated correctly when toggling the "Show information module separators" option. Fixed.
- When using large fonts in Windows, the main window would be a bit too high and the modules would not be aligned properly. Fixed.
- When module alignment was set to "justify", the modules would sometimes not be aligned properly due to a slight rounding bug in the placement calculation. Fixed.
- The "Remember this selection when screen resolution changes" option did not work when StatBar was running in auto-hide mode. Fixed.
- The main window would be positioned incorrectly when switching color depth or when using Fast User Switching in Windows XP. Fixed.
- When modifying the path to the Winamp executable in the configuration window, the changes you made would not be saved. Fixed.
- If the taskbar was positioned at the side of your screen in auto-hide mode while StatBar was not running in auto-hide mode, the main window would not cover the entire screen width. Fixed.
- When disabling auto-hide from the configuration window, StatBar would sometimes quit with an error message stating "An error has occurred while registering the application bar with the Windows Shell". Fixed.
- Under NT 4.0, StatBar would sometimes not save its module configuration when closing the program. Fixed.
- When clicking Apply and then OK in the configuration window after adding the master volume control module on a system without a sound card, StatBar would display the message "Unable to open mixer. Volume control will be disabled." twice instead of once. Fixed.
- StatBar would crash on startup on Windows 95 and NT 4.0 without the Active Desktop Update installed. Should be fixed now.
- StatBar would often disappear when "Show Desktop" was clicked (or when WinKey+D was pressed, which is essentially the same). Should be fixed now.
- Hopefully fixed a strange bug which sometimes caused white backgrounds to be displayed behind the digits in the Windows Default color scheme.
- Hopefully fixed another weird bug which somehow caused the program to display a "Program has been modified. Click OK to quit." message at startup on certain systems.
- StatBar now forces the shell to re-initialize the working area on startup of the program; this is useful if StatBar or another application desktop toolbar has crashed and has thus left behind a non-accessible part of your desktop.
- The Blue & White color scheme was removed in version 2.21; re-added it at the request of a few users.
- Slightly modified the WinXP Silver color scheme.
- Removed the "MB" text in the memory status info module.
- Replaced the disk icon on the harddisk information module and the mute/unmute speaker icons on the master volume module by Windows XP-style icons.
- Made various texts on the main window appear in a thinner font. This looks a bit nicer and saves some screen space as well.
- Replaced the two time server input boxes (one for predefined servers and one for a custom server) by a single input box.
- Clicking the volume percentage now opens the standard Windows volume control.
- Scrollwheel support for the volume control was originally designed for Windows 98 / NT4

and above. Now added support for Windows 95 as well.

- Added the QuickLaunch module.
- Added the Dial-Up Networking status module.
- Added the network traffic meter module.
- Added the ability to set the alpha transparency for the main window and the disk information panel (only for Windows 2000 and above).
- Added the "Joint Totals" line to the disk information panel (only visible when you have more than one harddisk partition).
- Added the "jump to file" button to the Winamp controls.
- Switching between the available/used memory and the elapsed/remaining Winamp song time can now be done with a single mouse click (used to be a doubleclick).
- Added an extra "minute digit" to the Winamp info module for songs longer than 99:59.
- The Winamp info module now displays a minus sign in front of the remaining song time.
- Removed some time servers which weren't functioning anymore. Added some new ones as well; the built-in list is now 50% longer than before.
- Made some internal changes to the update check function.
- Raised the connection timeout for the time synchronization module from 2000 to 5000 milliseconds.
- Rearranged the configuration window a bit.
- Gave the about box a new look.
- Did some internal restructuring of the code.

- **Version 2.21 (October 31, 2001)**

- Since version 2.2, the tab sequence in the configuration window didn't work properly anymore. Fixed.
- When the "Open website on logo doubleclick" option was enabled, doubleclicking on the utter left of the bar would also open the website when the logo wasn't visible. Fixed.
- When you had StatBar in auto-hide mode while the taskbar was positioned at the side of your screen, the program would switch between the full screen width and the work area width when popping up. Fixed.
- Setting StatBar in auto-hide mode at the bottom of your screen would occasionally hang the program. Fixed.
- When switching to auto-hide mode, StatBar would not be displayed until you activated another window. Fixed.
- Under Windows XP, the popup menu, the disk information panel, and the Windows start menu would all drop behind the main window. Fixed.
- Replaced the Blue & White color scheme by a Windows XP style Blue scheme.
- Added the Windows XP style Silver color scheme.
- Added the ability to hide the digit backgrounds.
- Added the ability to hide the Winamp song time.
- Added the ability to hide the information module separators.
- Added "pointing-finger" mouse cursors to the items in the information modules you can click or doubleclick.
- The tooltip for the Windows uptime now displays the time the system was started.
- Added a link to the new StatBar website to the about box: www.statbar.nl. Added a link to [Shock Media](#) as well; thanks to them for hosting the site.

- **Version 2.2 (October 21, 2001)**

- On Windows 2000 and Windows XP systems, the Shut Down button (part of the exit/lock buttons module) did not power off the system when possible. Fixed.
- If a harddisk partition was present that is not accessible by Windows, StatBar would crash when you opened the harddisk information panel. Fixed.
- When clicking the e-mail link in the about box, Outlook Express did not parse the string

passed to it correctly (Outlook 2000 did however). Fixed.

- The current user name is now displayed when asking for confirmation for logoff, shutdown or reboot.
- When your screen resolution changes, and then changes back to the original resolution, the modules you originally selected are restored. This is useful when you run applications that use a lower screen resolution than your desktop (mostly games), and thus cause StatBar to hide the modules that didn't fit anymore. This behavior can be turned off by disabling the "Remember this selection when screen resolution changes" option.
- Added the ability to align the info modules to the left or the right of the main window, or to distribute them evenly (justify).
- Added the ability to display the remaining Winamp song time instead of the elapsed song time.
- The tooltip for the "Winamp:" text now displays the current song name.
- Added the open/close Winamp button to the Winamp controls.
- StatBar 2.1 made Windows forcibly terminate all processes on shutdown or reboot. This behavior is now turned off by default and can be turned on by enabling the "Forcibly kill processes on shutdown/reboot" option.
- Added the "Beep when changing volume" option.
- Implemented an update check function; StatBar can now check if there is a new version available, and if so, it can even download and install it for you!

- **Version 2.1 (September 29, 2001)**

- StatBar is now compiled with Visual Basic 6.0, former versions were compiled with VB 5.0.
- The list with available info modules wasn't sorted properly when you opened the configuration window. Fixed.
- The width of the CPU usage and Free & total RAM info modules wasn't updated when you (un)checked the graph options. Fixed.
- When switching screen resolution, StatBar would sometimes get an incorrect size (it was suddenly too short to cover the entire width of your screen). Fixed.
- Changed/added a few things in order to save screen space:
 - Renamed "Running" to "Uptime", "CPU Usage" to "CPU" and "Free RAM" to "RAM".
 - Removed the word "Status" in the battery status info module.
 - Added the ability to hide the StatBar logo on the left.
 - Added the ability to hide most of the module indicator texts.
- Renamed the Free & total RAM info module to Memory status.
- Removed the free registration screen; all it did was putting your name in the about box, which is actually quite useless. Registry entries relating to this screen, created by former versions of StatBar, are automatically deleted.
- Added the ability to display the amount of memory currently in use instead of the amount of free memory.
- Doubleclicking the NumLock, CapsLock or ScrollLock lights will now toggle the state for that particular key.
- Slightly modified the "Windows Default" color scheme; it now uses the Windows 2000/ME tint of gray instead of the old Windows 95/98/NT4 one.
- The total amount of RAM is now automatically corrected, as the GlobalMemoryStatus call in Windows always returns a little less than it should (see [Tips, Tricks, Notes & Bugs](#)). You can turn off this behavior by enabling the "Don't correct total amount of RAM" option.
- The Windows version info module now has a tooltip displaying the build number and service pack (if applicable).
- Rearranged the configuration window.
- Added Winamp controls.
- Added CD door eject/close buttons.
- Added the exit/lock buttons.

- Added the Harddisk information module.
- Added the "Open homepage on logo doubleclick" option.
- Added the "Require mouseclick when auto-hiding" option.
- Added the "Run StatBar on Windows startup" option. If you enable this option, you should remove any shortcuts to StatBar in your startup folder.
- Hopefully fixed some weird program crashes on Win98 and NT4 systems.
- Slightly modified this help file.

- **Version 2.01 (February 14, 2001)**

- On systems without a sound card, StatBar always displayed a mixer error, even if the volume control wasn't displayed. Fixed.
- Under certain circumstances, the distributed.net client splits text lines in the logfile, which caused StatBar to read the file incorrectly. Fixed.
- Added OGR logfile support and thus renamed the RC5 counter to RC5/OGR counter.
- Reduced auto-hide sensitivity slightly; you have to move your mouse a bit closer to the edge of your screen now to pop up the main window.
- Added scrollwheel support to the volume control.
- The tooltips for the volume control now also display the product name of your sound card.
- Changed "Win.Whistler" to "Windows XP", which is the official name revealed by Microsoft on February 5, 2001.
- 3D-edges are now drawn around the buttons in the configuration window and the about box. Looks quite nice :-)
- Modified the about box a bit.
- A few small (internal) changes.

- **Version 2.0 (January 28, 2001)**

- If you had the about- or help screen visible and the StatBar window was about to reset automatically (e.g. because of a change in screen resolution), the program would crash. Fixed.
- Added the configuration window, in which you can select which information elements will be displayed and which won't.
- Added master volume and mute control.
- Added detection of Windows Whistler (which is the codename for NT 5.1).
- Added the option to hide the CPU and memory history graphs.
- Added the "Windows Default" color scheme.
- Improved the speed of color scheme changing.
- Added the RC5 counter.
- Added time server synchronization.
- Added the ability to set the interval at which StatBar updates its information yourself.
- Added the the ability to auto-hide the main window.
- Made various (big) enhancements to the routines that manage how StatBar deals with the Windows shell. Also, the main window will not overlap the Windows Start button anymore if you have placed the taskbar at the side of your screen.
- When moving the main window from top to bottom or vice versa, it used to reset itself completely. This doesn't happen anymore.
- Replaced the RichText help screen with this help file; therefore the RICHTX32.OCX file is no longer needed.
- Numerous internal changes.

- **Version 1.2 (December 2, 2000)**

- When you displayed the about box for the first time, the registered name and organization would not be shown. Fixed.
- Under some circumstances, changing the color scheme would cause StatBar to exit. Fixed.

- If your screen resolution is modified, or if your desktop area changes (e.g. by moving the taskbar or an Internet Explorer QuickLaunch bar), StatBar will now reset itself automatically.

- Added battery status information; useful if you are using StatBar on a notebook computer.

- Added support for Windows NT 4.0.

- **Version 1.11 (October 31, 2000)**

- Added detection of Windows 2000 (it was formerly just recognized as NT 5.0).

- **Version 1.1 (July 24, 2000)**

- The total amount of memory is now properly rounded. Windows always detects a little less memory than you actually have (on my 128 MB desktop machine it detects 130,612 KB instead of 131,072), and StatBar 1.0 always truncated the fractional part. It now simply rounds at .5.

- Added detection of Windows 98 Second Edition (StatBar 1.0 just recognized it as Win98).

- Added the ability to place the main window at the bottom of your desktop.

- Added the Blue & White and Red & Yellow color schemes.

- Added a menu option to reset the main window.

- Removed the internet connection status light; it didn't work properly with various network configurations.

- Added Num Lock, Caps Lock and Scroll Lock status lights.

- **Version 1.01 (July 6, 2000)**

- Fixed something small, but I can't remember what exactly ;-)

- **Version 1.0 (July 3, 2000)**

- First release; this version of StatBar supported every version of Windows since Win95, except for NT 4.0.

Development

- **A few facts about the development of StatBar:**

- StatBar was developed using MS Visual Basic 6.0 Professional Edition and a number of graphics applications.
- Most of the development has been done on Windows 2000 Professional.
- The source code for StatBar is currently 9216 lines long.
- StatBar is written in 100% pure VB, no external DLL or OCX files are required (except for the VB6 runtime libraries and some standard Windows libraries).

I can hardly imagine that anyone cares about this, but hey, I had to type *something* here... :-)

Contact

- If you come across a bug in StatBar, please call an exterminator at once or spray some of your favourite pesticide to kill the ugly beast! ;-) If that doesn't work, if you want to ask questions about the program or if you have useful suggestions, please check out the FAQ section on the StatBar website first. If you were unable to find an answer there, contact me at the e-mail address below.

 **E-mail:** info@statbar.nl

 **Website:** www.statbar.nl

- **E-Mail Error**

Unable to launch default e-mail client!

- **Trademarks**

- Microsoft, Windows, Windows 95, Windows 98, Windows NT, Windows 2000, Windows Millennium Edition, Windows XP, Longhorn and Visual Basic are registered trademarks of Microsoft Corp.
- All other trademarks are the property of their respective owners.

That should keep the lawyers happy... ;-)

Information modules which are available to be displayed are listed here. The width the module will take up on your screen is displayed in parenthesis.

Information modules you have selected to be displayed are listed here. The width the module takes up on your screen is displayed in parenthesis.

Adds the selected available information module to the list of visible modules.

Removes the selected information module from the list of visible modules.

You can use these buttons to modify the display order of the visible information modules.

Applies the changes you made and closes the configuration window.

Discards the changes you made and closes the configuration window.

Applies the changes you made without closing the configuration window.

This opens the configuration window.

This toggles the main window's auto-hide state.

This toggles whether or not you have to click the main window to pop it up in auto-hide state.

This will display a submenu in which you can select the color scheme for the main window. Currently, 6 different schemes are available:

- Gray & Green
- Blue & White
- Red & Yellow
- Windows Default (Windows ME/2000 style)
- Silver (Windows XP style)
- Blue (Windows XP style)

This will display a submenu in which you can select the main window's position, which can be either at the top or at the bottom of your screen.

This will reset the main window. This is only necessary if the main window somehow gets set to a wrong position (which shouldn't happen ;-)).

Opens this help file.

This opens the update check window.

This opens the program's about box.

This closes StatBar.

